

Venting & Volume Analytics, Tracked & Stored.

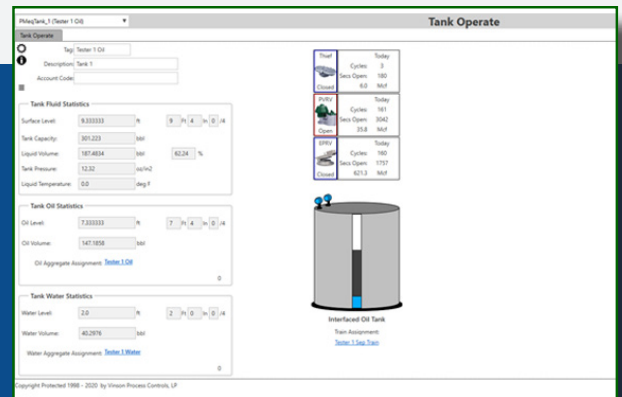


ProductionManager™ Equipment Module Vent Volume Analytics Add-On

ProductionManager Equipment Module now supports the tracking of venting-related statistics, including current open status, vent opening counter, and venting duration. Additionally, when using Enardo devices with the Enardo Vent Volume Analytics option, estimated venting and vacuum volume analytics are tracked and stored. This information is available to report via SCADA or local software connection.

Improve Your Vessel Management Capabilities

The lack of awareness related to venting inhibits the ability to mitigate HSE incidences and reduce financial risks caused by venting. ProductionManager EDGE® for FB3000 can track venting and vacuum statistics, providing analytics and potentially closed-loop control to mitigate venting events.



Tank ID	Tank Name	Capacity	Current Level	Volume	Pressure	Temperature	Venting Status	Volume	Duration
1001	Tank 1	10000	5000	5000	100	100	Open	1000	10
1002	Tank 2	10000	8000	8000	100	100	Open	2000	20
1003	Tank 3	10000	3000	3000	100	100	Open	500	5

Achieve Your Environmental Goals

By increasing your visibility into the frequency or duration of open events, we can help you to accurately estimate your total amount of vented product. Now you can gain better insight into venting to achieve environmental and operational goals.

How Will Equipment Module Benefit Your Operation?

If optimizing well production in the field or behind a desk is important to you, Equipment Module can be of great benefit.

- **Field Operations**
Ease-of-use and configuration, measurement, current operating status, production optimization
- **Facility Engineers**
Standardized deployment of equipment and facilities
- **Production/Reservoir Engineers**
Better reservoir management through captured data and well analytics
- **Management/HSE/Accounting**
Safety controls, standardization, custody transfer measurement and log retrieval
- **SCADA/IT Administration**
Standardized data model provides consistent access to optimization, analytics and operational parameters

Support

- Help desk support is available 24/7.
- Training classes are offered year-round.
- Onsite configuration assistance is available upon request via your local Emerson Impact Partner.

ProductionManager EDGE® Suite

The ProductionManager EDGE® suite of applications is designed to provide standardized yet flexible solutions to common processes in the Oil & Gas production field. The suite is designed to assist with managing the lifecycle of the well (from flowback to abandonment), managing well testing for allocation purposes, and complete fluids management from well-to-sell. This comprehensive suite of applications has been enhanced by input from Major and Independent E&P companies alike, and utilized in North America for over 20 years with tremendous success.

ProductionManager™ Equipment Module (PMEQ)

The ProductionManager Equipment Module (PMEQ) gives you the ability to define, build, monitor, track and diagnose the equipment installed on your upstream production site. PMEQ allows for operational analysis and diagnostics of onsite equipment.

ProductionManager™ Well Optimization (PMWO)

ProductionManager™ Well Optimization (PMWO) allows you to optimize production based on industry standard methods. This application provides your operation with continuous, real-time optimization of production, as well as surface and downhole analytics. PMWO records optimization statistics needed to identify key trends, allowing you to better manage your decline curves.

Coming Soon

- **ProductionManager EDGE™ Fluid Logistics (PMFL)**
- **ProductionManager EDGE™ Interface (PMEI)**
- **ProductionManager EDGE™ Chemical Manager (PMCM)**

ProductionManager™ Well Test (PMWT)

ProductionManager™ Well Test (PMWT) allows you to maintain accurate allocation measurement while achieving facility cost reduction goals. Now you can rest easy knowing that potential issues with allocation, scheduling, multiple testers and optimal test results are a thing of the past.

ProductionManager™ Surface Controls (PMSC)

ProductionManager™ Surface Controls allows the user to perform control, logic, and mathematical functions using easy to configure pre-designed menus. Surface Controls facilitates configuration of your complete cause and effect narrative, handling temporary or permanent shutdowns, permissives, bypasses, alarming and other utility functions.

Dallas Headquarters
Vinson Process Controls
2747 Highpoint Oaks Drive
Lewisville, TX 75067
T: 800-420-6571
T: 972-459-8200
Fax: 972-459-8299

Odessa
Vinson Process Controls
320 Interstate 20 Service Rd, #C
Odessa, TX 79766
T: 800-420-6571
T: 972-459-8200
Fax: 972-459-8299

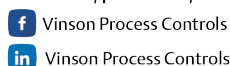
Farmington
Vinson Process Controls
2030 Cortland Dr.
Farmington, NM 87401
T: 800-420-6571
T: 972-459-8200
Fax: 972-459-8299

Carrollton
Vinson Process Controls
2933 Eisenhower
Carrollton, TX 75007
T: 800-420-6571
T: 972-459-8200
Fax: 972-459-8299

OKC
Vinson Process Controls
2545 S. Kelly Pointe Suite #C
Edmond, OK 73013
T: 800-420-6571
T: 972-459-8200
Fax: 972-459-8299

Tulsa
Vinson Process Controls
12211 E. 51st ST.
Tulsa, OK 74146
T: 800-420-6571
T: 972-459-8200
Fax: 972-459-8299

vinsonprocess.com/products/remote-automation-solutions/



www.vinsonprocess.com/products/remote-automation-solutions